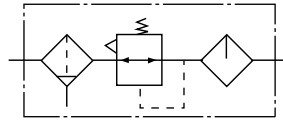


**HNA** 系列 气源处理元件  
Series Air Filter Combination

**HNAC** 系列金属杯空气过滤减组合 (二联件)  
series Air filter combination (F.R.L) with metal cup

图形符号 Graphical symbols



技术参数 Specification

保证耐压力 / Pressure	1.5MPa (15kgf/cm <sup>2</sup> )
最高使用压力 / Max Working Pressure	1.0MPa(10kgf/cm <sup>2</sup> )
环境及流体温度 / Ambient and Fluid Temperature	5-60°C
*过滤精度 / Filter Precision	25µm
建议用油 / Recommended Oil Use	透平1号油 ISOVG32 / Turbine No.1 Oil ISOVG32
容器材料 / Container Material	铝压铸件 / Aluminum Die Casting
调压范围 / Pressure Regulating Range	0.05~0.85MPa(0.5~8.5kgf/cm <sup>2</sup> )
阀型 / Valve Type	带溢流型 / With Overflow

还有5、50µm可供选择。 / 5, 50µm available in addition

型号 Model	规格 Specifications						配件 Accessories		放水器功能 Drain function	自动排水型号 Auto Drain Model
	组件 / Assembly		*额定流量 Rated Flow (L/min)	**接管 口径 Port Size	压力表 口径(G) Pressure Gauge Size	重量 Weight (kg)	托架 Bracket	压力表 Pressure Gauge		
	过滤减压阀 Filter and Regulator	油雾器 Lubricator								
HNAC2010-01M	HNAW2000	HNAL-2000	500	1/8	1/8	0.66	Y20L	G36-10-01	手动排水 Manual drain	HNAC2010-01MD
HNAC2010-02M				1/4						HNAC2010-02MD
HNAC3010-02M	HNAW3000	HNAL3000	1700	1/4	1/8	0.98	Y30L	G36-10-01	a. 停气排水 Air shut off drain	HNAC3010-02MD
HNAC3010-03M				3/8						HNAC3010-03MD
HNAC4010-03M	HNAW4000	HNAL4000	3000	3/8	1/4	1.93	Y40L	G46-10-02	b. 手动排水 Manual drain	HNAC4010-03MD
HNAC4010-04M				1/2						HNAC4010-04MD
HNAC4010-06M	HNAW4000-06M	HNAL4000-06M	3000	3/4	1/4	1.99	Y50L			HNAC4010-06MD
HNAC5010-06M	HNAFW5000	HNAL5000	4000	3/4	1/4	3.20	Y60L			HNAC5010-06MD
HNAC5010-10M				1						HNAC5010-10MD

\*供应压力为0.7MPa (7.1kgf/cm<sup>2</sup>) 设定压力为0.5MPa(5.1kgf/cm<sup>2</sup>)的情况下  
On condition that supply pressure is 0.7MPa(7.1kgf/cm<sup>2</sup>) and set pressure is 0.5MPa(5.1kgf/cm<sup>2</sup>)

\*\*接管口径另有Rc、NPT螺纹可供选择 / Rc. and NPT port size are available.