

W 系列截止式换向阀

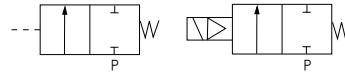
Series Poppet Valve

K22J-W 系列截止式电磁换向阀

Series poppet valves 2/2-way



图形符号 Graphical symbols



产品特点 Features

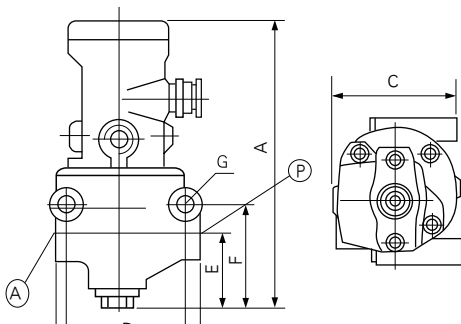
K22J-W系列是二位二通管接截止式换向阀。该阀结构合理，动作可靠，维修方便，尤其适用于较为恶劣的工作环境。分电控和气控两种。

K22J-W series is 2/2 way poppet valve for line Mounting.Streamlined sructure, reliable action easy of maintenance,and especially suites to tough work conditions.Tow types:solenoid pilot control or Air remote pressure control

型号注释 Order Code

K 22 J D - 15 W

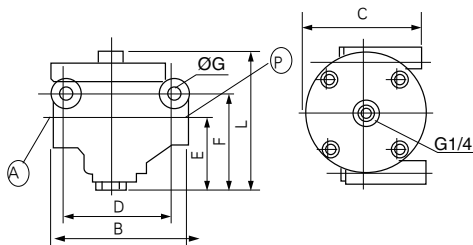
空气介质	Air medium
二位二通	2/2 ways
截止式	poppet valve
D单电控、K单气控	D:Single solenoid pilot control K: air head for remote pressure control
公称口径	Dia
W或WHT公司代号	W or WHT Company code



技术参数 Specification

型号 type	K22J-8W	K22J-10W	K22J-15W	K22J-20W	K22J-25W	K22J-32W	K22J-40W
流量 Flow rate(m ³ /h)	5	7	10	20	30	40	50
有效截面积S值 Effective sectional area(mm ²)	20	35	60	120	190	300	400
泄漏量 Leakage rate(cm ³ /min)	≤50	≤100	≤200	≤300			
换向时间 Direction diverting time(ε ec)	≤0.04	≤0.06	≤0.10	≤0.15			
切换频率 Switch-over frequency(Hz)	≥10	≥8	≥4	≥3			
工作压力 Working pressure(MPa)	0.2-0.8						
电压 Voltage(V)	AC:380,220,110,36 DC:220,110,24						
工作温度 Working temp. (°C)	-5~50						

外形尺寸 Outlook & Dimension



型号Type	公称口径 Dia	接管螺纹Threads 英制G	A	B	C	D	E	F	G	L
			K22J-8WHT	Ø8	G1/4	169.5	89	78	71	39.5
K22J-10WHT	Ø10	G3/8								
K22J-15WHT	Ø15	G1/2								
K22J-20WHT	Ø20	G3/4	185	113	78	82.5	45	69	Ø8.5	96
K22J-25WHT	Ø25	G1								
K22J-32W	Ø32	G1¼	240	165	91	118	75	112	Ø13	152
K22J-40W	Ø40	G1½								